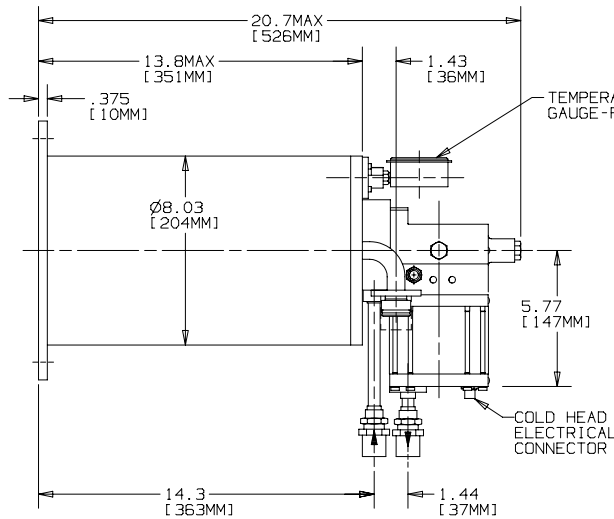
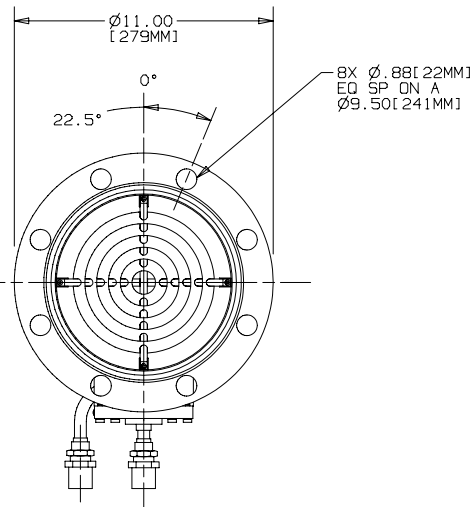


4

3

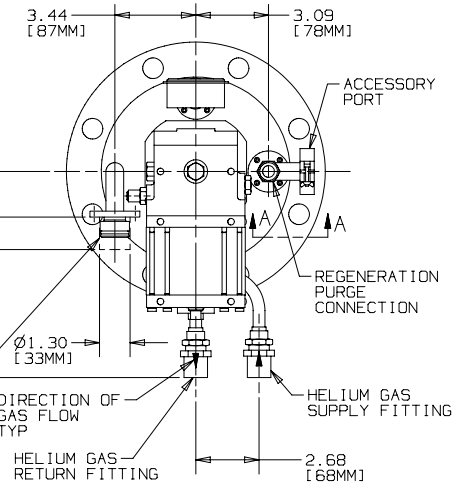
2

1



TEMPERATURE (H<sub>2</sub> VAPOR PRESSURE) GAUGE-FACE READS FROM THIS SIDE

VACUUM VESSEL PRESSURE RELIEF VALVE, Ø1.30 X 1.38 LONG AREA AROUND RELIEF VALVE MUST REMAIN CLEAR.



ACCESSORY PORT

REGENERATION PURGE CONNECTION

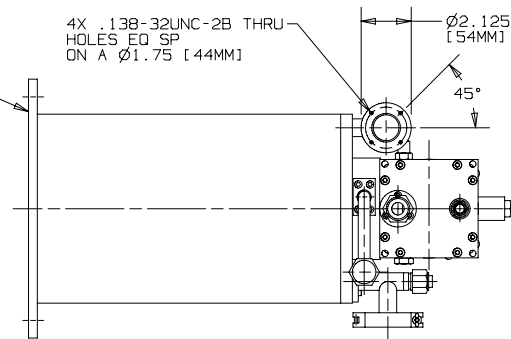
HELIUM GAS SUPPLY FITTING

DIRECTION OF GAS FLOW TYP

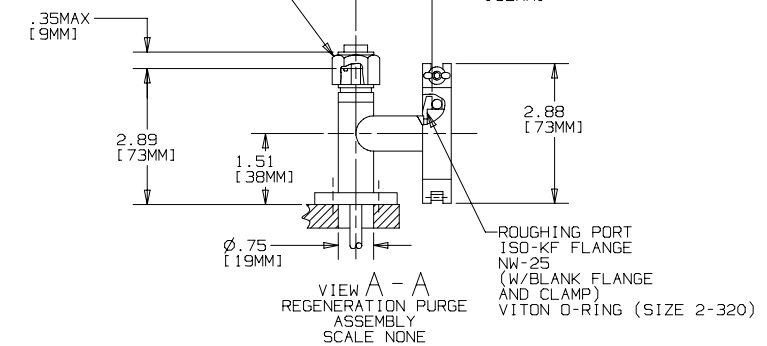
HELIUM GAS RETURN FITTING

THE CRYOPUMP MTG FLANGE MATING SURFACE MUST BE FLAT WITHIN .010 [0.254MM] & HAVE 32/C FINISH MIN IN THE AREA OF THE O-RING SEAL. (SIZE 2-172)

4X .138-32UNC-2B THRU HOLES EQ SP ON A Ø1.75 [44MM]



PURGE FITTING PARKER CPI ULTRASEAL SIZE 6 (W/PLUG AND NUT) VITON O-RING (SIZE 2-012)



VIEW A - A  
REGENERATION PURGE ASSEMBLY  
SCALE NONE

ROUGHING PORT ISO-KF FLANGE NW-25 (W/BLANK FLANGE AND CLAMP) VITON O-RING (SIZE 2-320)

NOTES:

1. MATERIAL: STAINLESS STEEL VACUUM VESSEL AND MTG FLANGE (WELDED CONSTRUCTION THROUGHOUT).
2. WEIGHT: 45 LB (20.4 KG).
3. ELECTRICAL POWER: 100 WATTS SUPPLIED THROUGH CTI CONTROL PANEL.
4. CRYOPUMP MAY BE OPERATED IN ANY ORIENTATION.
5. THE O-RING GROOVE IS A DOVETAIL DESIGN.
6. DIMENSIONS ARE NOMINAL IN INCHES, UNLESS OTHERWISE SPECIFIED.

**CTI-CRYOGENICS**  
HELIX TECHNOLOGY CORPORATION

INSTALLATION/INTERFACE  
CRYO-TORR® 8 W/VPG  
HIGH VACUUM PUMP

SIZE	CAGE CODE	DWG NO	REV
C	31949	8033168	C
SCALE	NONE	EST WT	SHEET 1 OF 1

CAD FILENAME : CMS: 8033168  
PLOT DATE :  
CREATED FROM :

4

3

2

A